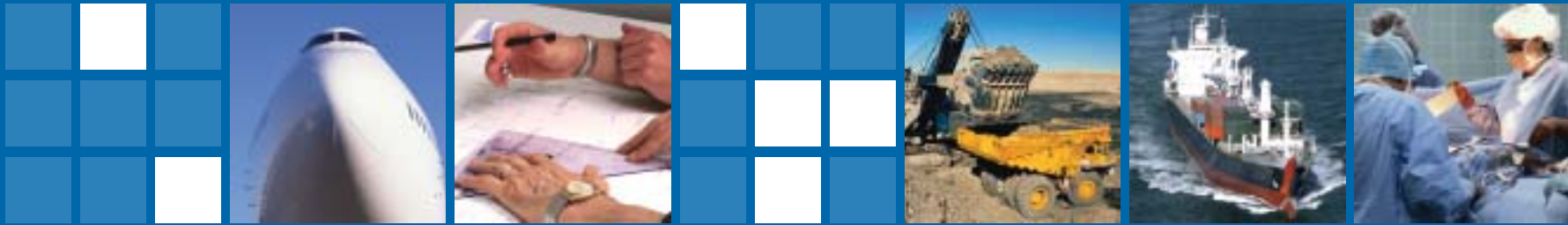


MARSH



**The World's Leading  
Risk Specialist**



## MMC

Marsh & McLennan Companies (MMC) is a global professional services firm with annual revenues exceeding US \$11 billion.

It is the parent company of:

- Marsh Inc., the world's leading risk and insurance services firm
- Putnam Investments, one of the largest investment management companies in the United States
- Mercer Inc., a major global provider of consulting services.

From its beginnings in 1871, MMC has evolved into an enterprise in which some 60,000 MMC employees across the world provide analysis, advice and transactional capabilities to clients in more than 100 countries.

The company's professionals strive to provide clients with the best thinking – which may come from any of our businesses, anywhere around the world. This is the result of years of systematically fostering collaboration and using all the subsidiaries' strengths to service clients more comprehensively.

In Asia, MMC is headquartered in Hong Kong and enjoys a strong and established presence through a network of operating companies that stretches across many countries.

## Marsh Inc.

Marsh Inc. is the world's leading provider of risk management and insurance broking services to the commercial sector.

As an operating unit of MMC, Marsh is able to access the unique resources and capabilities of MMC's consulting and investment management business units on behalf of its clients.

Marsh's corporate mission, to *create and deliver risk solutions and services that make our clients more successful* is focused on one overriding objective – to be its clients' trusted business advisor.

Within Marsh Inc. more than 35,000 employees serve clients from more than 400 owned-and-operated offices – the most in our industry. Such resources allow the company to develop creative and innovative solutions to identify, evaluate, control, transfer and finance risks.

In every region of the world, Marsh uses its global strength to manage risk beyond traditional "physical risk" areas by providing financial, operational and strategic exposure analyses and focusing on risk solutions that help strengthen its clients' balance sheets thereby fostering higher levels of investor and customer confidence.



## Marsh in Asia

As businesses in Asia have seen their risks become more diverse and complicated, they have come to Marsh as the world's leading risk and insurance organisation to investigate the integrated approach the company brings to risk management.

Across Asia, Marsh services a combination of major multinational operations and large- and mid-sized Asia-headquartered corporations through a wide network of offices in the region's key economies. These include China, Guam, Hong Kong, Indonesia, India, Korea, Macao, Malaysia, Philippines, Singapore, Taiwan, Thailand and Vietnam.

Every Marsh office in the region is well established as part of its local business community and supported by the organisation's worldwide strength, resources and the intellectual capital of the global network.

And, each location is staffed by professionals who understand local and regional risk issues, have an in-depth knowledge of local insurance markets and legislation, speak local languages and are experts in creating programs tailored to client needs.

The company's philosophy is that size alone doesn't count for much unless it is used to service clients more effectively and provide them with better solutions to their risk problems.

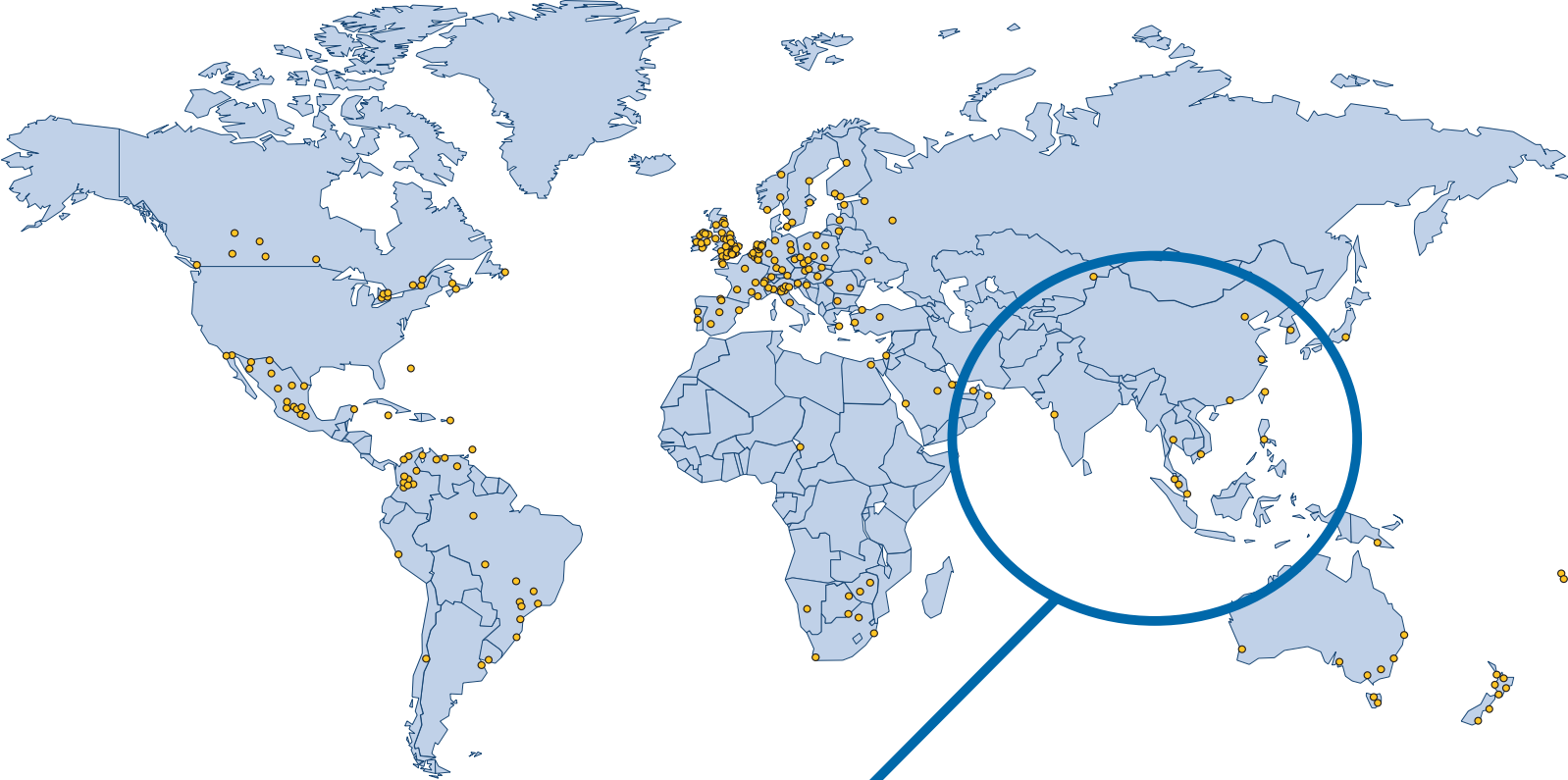
In addition to Marsh's regional branch office network, a range of industry specialty practices exist on-the-ground in Asia.

These include:

- Aviation & Aerospace
- Energy
- FINPRO – Professional Liability, Corporate Governance, D&O
- Infrastructure
- Japan Client Services
- Marine
- Trade Credit & Political Risks

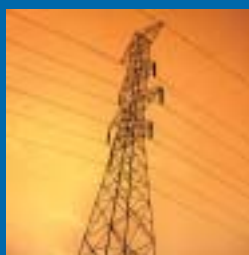
Marsh in Asia strives to combine its global strength and Asia know-how to provide clients with the best range of solutions to implement, including a complete portfolio of insurance services, risk solution consulting and reinsurance broking.

# Global Strength ■ Asia Know-how



- Marsh worldwide presence
- Marsh Asia presence

# MARSH



For further information, please contact your local Marsh office in Asia:

China ■ Guam ■ Hong Kong ■ India ■ Indonesia ■ Japan ■ Korea  
Macao ■ Malaysia ■ Philippines ■ Singapore ■ Taiwan ■ Thailand  
Vietnam

or visit our Website at:

[www.marsh.com](http://www.marsh.com)